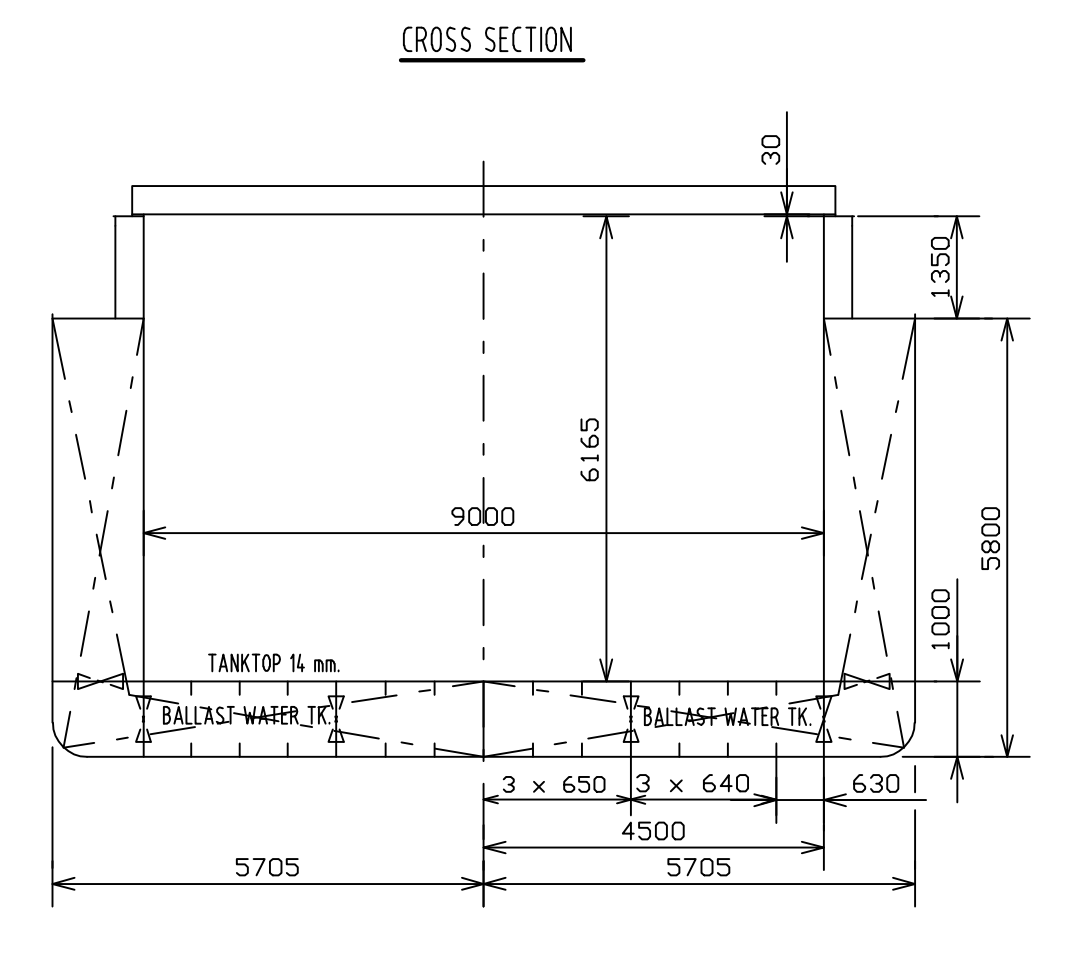
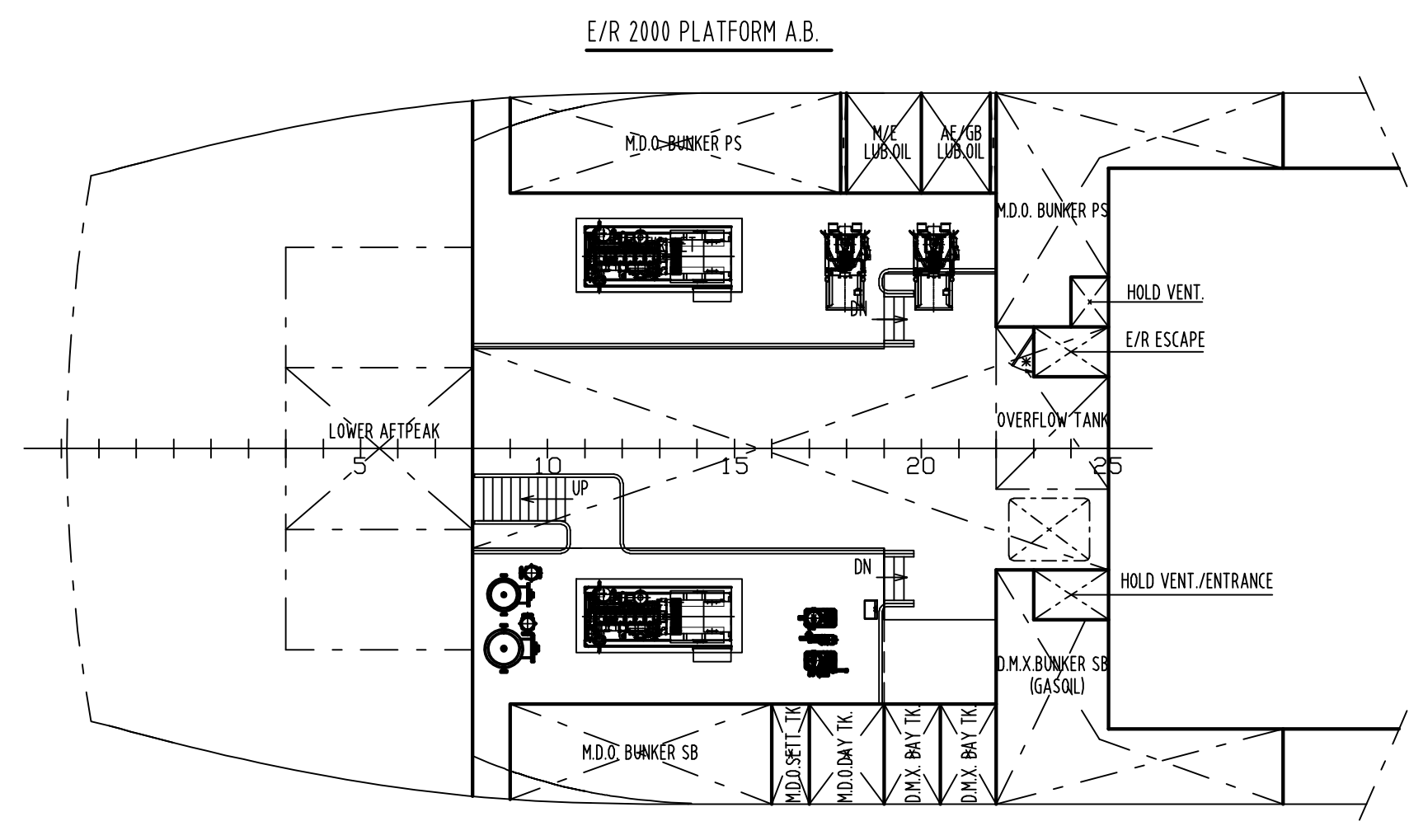
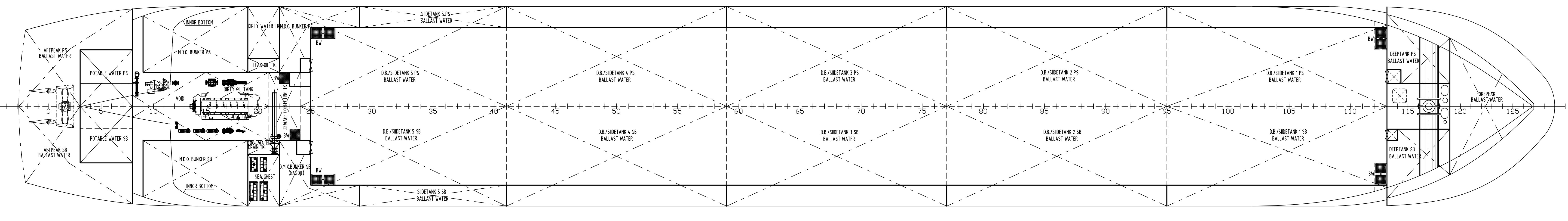


MAIN PARTICULARS

LENGTH OVER ALL MOULDED	87.91 m
LENGTH BETWEEN P.P. AT 85% D	84.98 m
BREADTH MOULDED	11.41 m
BREADTH EXTREME	11.45 m
DEPTH MOULDED	5.88 m
DESIGN DRAUGHT	4.10 m
* DEADWEIGHT IN SEAWATER	abt 2600 t
* HOLD CAPACITY	abt 129500 cu.ft.
TANK CAPACITIES: BALLAST WATER	1670 m³
M.O.	134 m³
POTABLE WATER	45 m³
TONNAGE	abt. 1900 GT.
* GRAIN BULKHEADS NOT ON BOARD	



TANKTOP



Ship Name: Fehn Courage	2600 DWT MPC VESSEL	Dwg.No. WHKH421-100-03F
Owner: Fehn Schifffahrts GmbH		This drawing and information contained in the exclusive property of WUHAN KEHUI MARINE ENGINEERING CO.,LTD and must not be copied or handed over to third party without our written permission. Violation is prosecuted according to applicable law.
Hull No. KYX07-801	GENERAL ARRANGEMENT	
BV Reg No. 13636Y		DESIGNED DATE
		CHECKED DATE
		VERIFIED DATE
	FINAL DRAWING	SCALE: 1:100
		WUHAN KEHUI MARINE ENGINEERING CO.,LTD.