



fehn ship  
management

## MV "Fehn Companion"



Fehn Ship Management GmbH & Co. KG

Hafenstraße 15

26789 Leer – Germany

Phone + 49 (0) 491 928 15 – 5

Fax + 49 (0) 491 928 15 – 99

info@fehnship.de

<http://www.fehnship.de>

# MV "Fehn Companion"

## General

Type	General cargo ship, heavy cargo, Singledecker
Built	2013, Wuxue Kaiyanxing Shipbuilding, China, yard no. KYX07-805
Class	BV I +HULL, +MACH, general cargo ship, unrestricted navigation +AUT-UMS, MON-Shaft
IMO no.	9557379
Flag	Antigua & Barbuda
Port of registry	St. John's
Call sign	V2GH6

## Dimensions

Length o.a.	87.91 m
Breadth	11.41 m
Draught	4.1 m
Air draft (in ballast)	abt. 24,0 m with mast up abt. 14,0 m with mast down
Gross tonnage / Net tonnage	1934 / 878
DWAT	abt. 2600 t

## Machinery/ Speed

Main engine	ABC – Diesel, Type 6 DZC 1325 kW at 1000 rpm	
Generator	Auxiliary Engine	2x MAN 2866 - 160 kW
	Emergency Engine	1x MAN 2866 - 90 kW
Fuel specification	MGO	
Bow thrusters	Yes	
Speed	abt. 10,0 kn	
Capacity of tanks	Ballast water	1616,8 cbm
	MGO	131,9 cbm
	Fresh Water	43,0 cbm

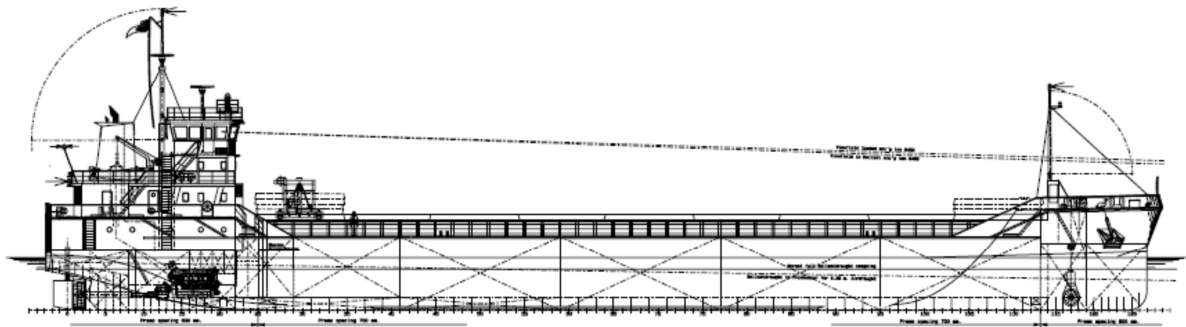
# MV "Fehn Companion"

## Hold/ Hatches

One hatch	61.60 m x 9.00 m
One hold	61.60 m x 9.00 m x 6.16 m
Strength on main deck	1,5 t / sqm
Strength on tank top	15,0 t / sqm
Container capacity	n/a
Reefer plugs	n/a
Hatch cover type	Pontoon type
Grain	abt. 120.600 cbf

## Cargo Features

Hold ventilation	Yes, 6 air circulations per hour (empty hold)
Dangerous goods	Yes – according certificates



Details about, given in good all faith but not guaranteed. Particulars believed to be correct, but without guarantee.