



# MV "Fehn Light"

---



Fehn Ship Management GmbH & Co. KG  
Hafenstraße 15  
26789 Leer – Germany

Phone + 49 (0) 491 928 15 – 5  
Fax + 49 (0) 491 928 15 – 99  
info@fehnship.de  
[http: // www.fehnship.de](http://www.fehnship.de)

# MV "Fehn Light"

## General

Type	Multi Purpose Dry Cargo, Heavy Cargo
Built	2010, Penglai Bohai Shipyard Co. Ltd., Ligang, Xicheng, China, yard no. PBZ04-39A
Class	GL + 100 A5 E3 G BWM, equipped for carriage of containers, strengthened for heavy cargo, SOLAS II-2, Reg.19 + MC E3 AUT
IMO no.	9349459
Flag	Latvia
Port of registry	Riga
Call sign	YLPI

## Dimensions

Length o.a.	107.03 m
Breadth	18.20 m
Draught	8.227 m
Air draft	31.60 m
Gross tonnage / Net tonnage	6668 / 3625
DWAT	abt. 9650 t

## Machinery/ Speed

Main engine	MaK– Diesel, Type 8M32C 3840 kW
Generator	Auxiliary Engine      Scania

	Shaft Generator
Fuel specification	MGO / IFO 380
Bow thrusters	yes
Speed	abt. 10 kn
Capacity of tanks	Ballast water      2986,6 cbm
	MDO / HFO      113 / 537 cbm
	Freshwater      136 cbm

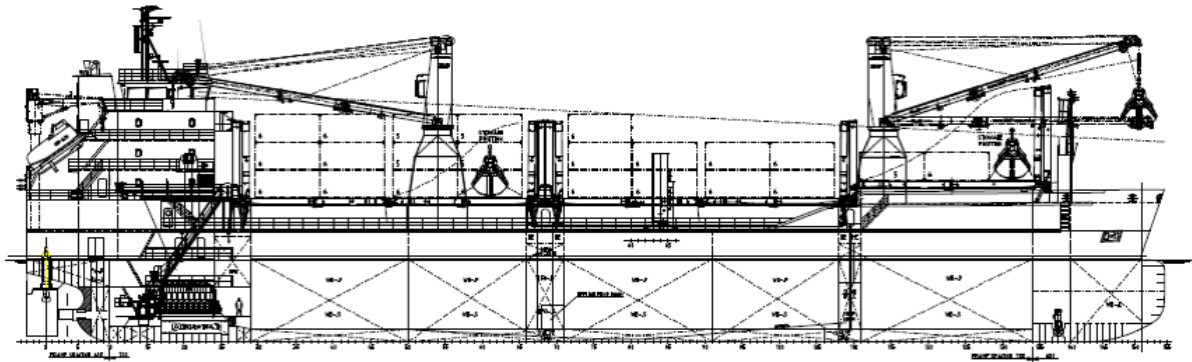
# MV "Fehn Light"

## Hold/ Hatches

Hold No.1	abt. 16.05 m x 15.16 m x 13.11 m
Hold No.2	abt. 25.85 m x 15.18 m x 11.60 m
Hold No.3	abt. 25.85 m x 15.18 m x 11.60 m
Strength on main deck	abt. 1,75 t/sqm
Strength on tank top	14 t / sqm Steel Coils up to 45 t
Container capacity	133 TEU on deck
Reefer plugs	n/a
Hatch cover type	Folding type
Grain	abt. 11770 m <sup>3</sup> / 428.593 cbf

## Cargo features

Cargo Gear	2 x NMF SWL 35t (4-18m) SWL 30t (4-24m)
Hold ventilation	Yes, 10 per/hour (empty hold)
Dangerous goods	Yes – according certificates



Details about, given in good all faith but not guaranteed. Particulars believed to be correct, but without guarantee.